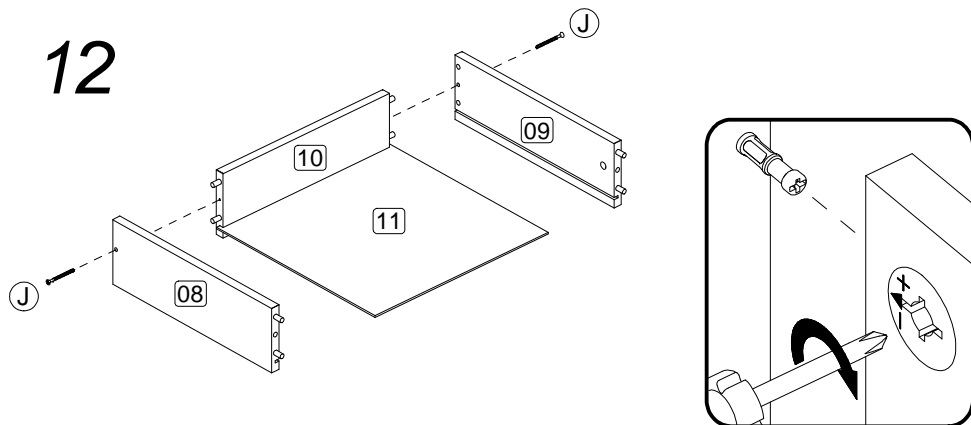
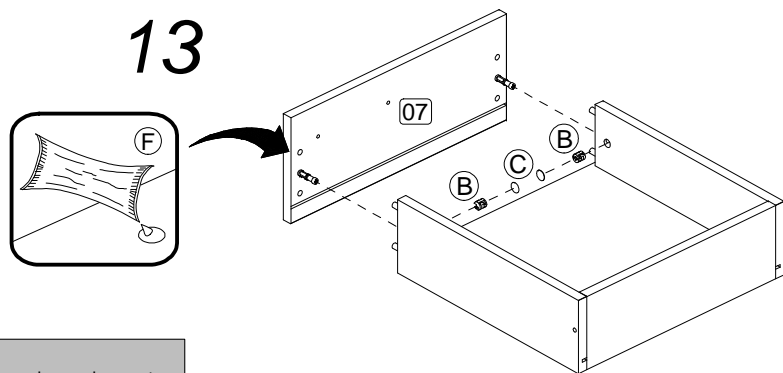


12



13

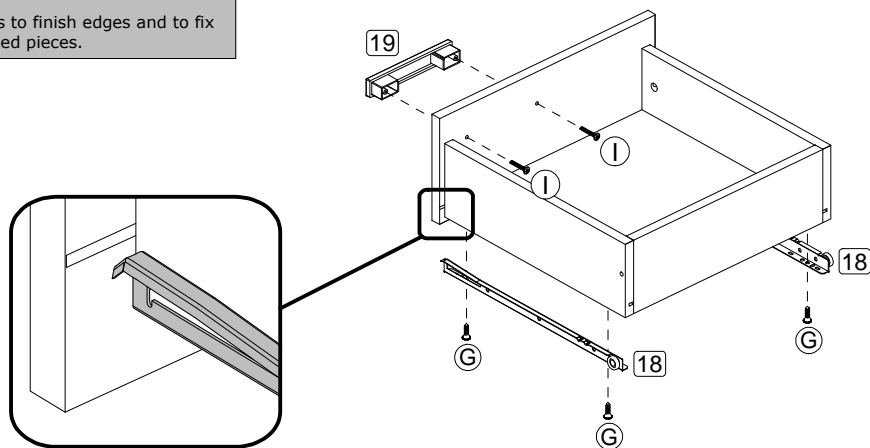


**ATENÇÃO!!!**  
Utilize o giz de cera para dar acabamento nas arestas e correções de possíveis riscos nas peças.

**ATENCIÓN!!!**  
Utilice el gis para los bordes y correcciones de posibles errores o daños en las piezas.

**ATTENTION!!!**  
Use the crayons to finish edges and to fix possible damaged pieces.

14



**INSTRUÇÕES DE MONTAGEM**

**INSTRUCTIVO DE ARMADO**  
**ASSEMBLY INSTRUCTIONS**

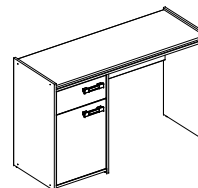


RSC 470 - km 203,3 BENTO GONÇALVES - RS - BRASIL  
FONE: 54-3458.1300  
sac@politorno.com.br  
www.politorno.com.br

Mesa Nazca  
Escritorio Nazca  
Office Table Nazca

Modelo  
Modelo  
Modelo

1215

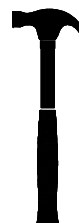


Caso você precise da indicação de um montador, consulte o site [www.politorno.com.br](http://www.politorno.com.br). Temos profissionais capacitados para indicar nas principais cidades do Brasil.

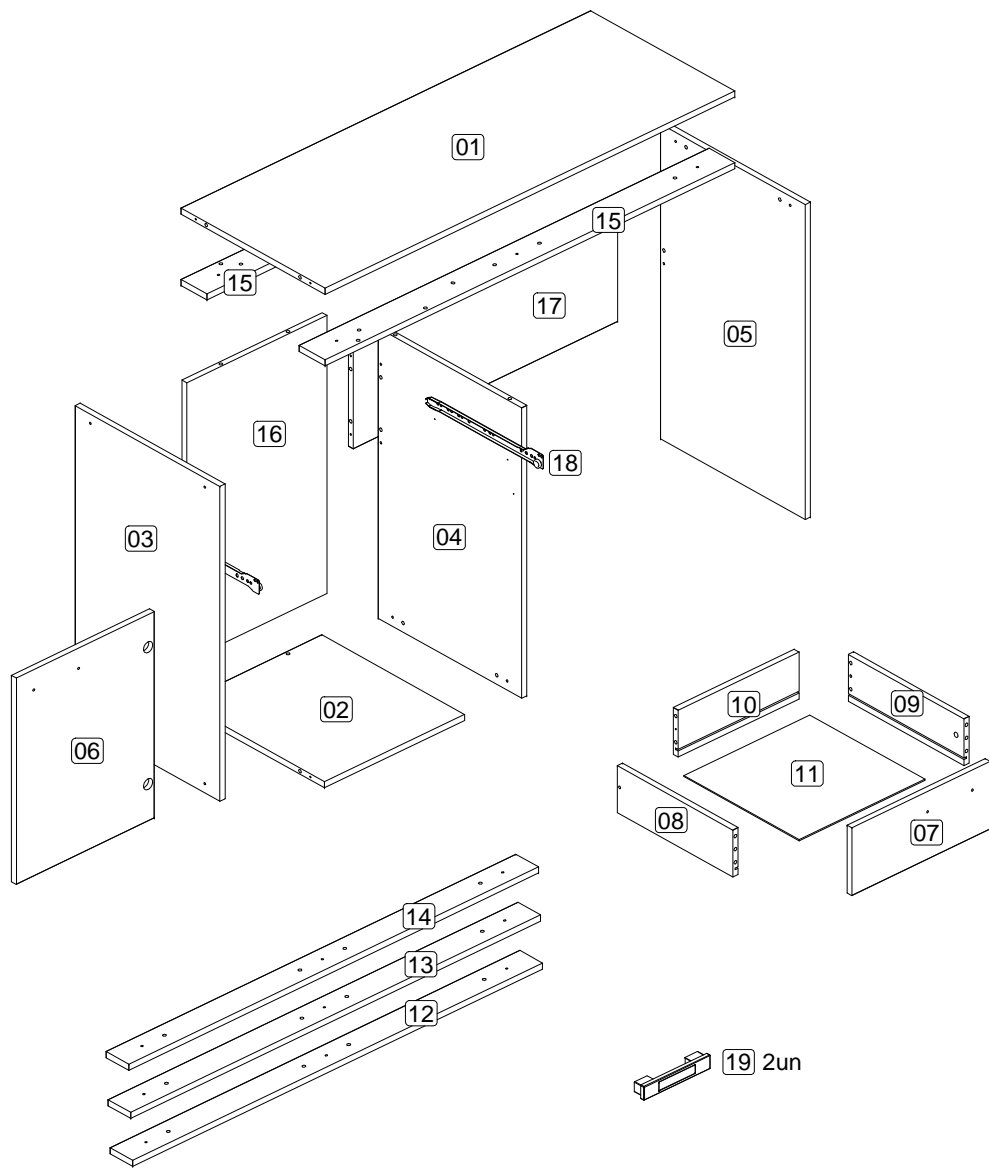
KIT FERRAGEM  
KIT HERRAJE  
HARDWARE KIT

A		02
B		02
C		02
D		10
E	08x30	26
F		01
G	3,0x14	08
H	3,5x14	13
I	3,5x25	04
J	4,5x40	08
K	5,0x50	12
L		01
M		06
N		06
O		02
P		02
Q		01
R	08x40	08
S		02
T	Giz / Gis / Crayons	03

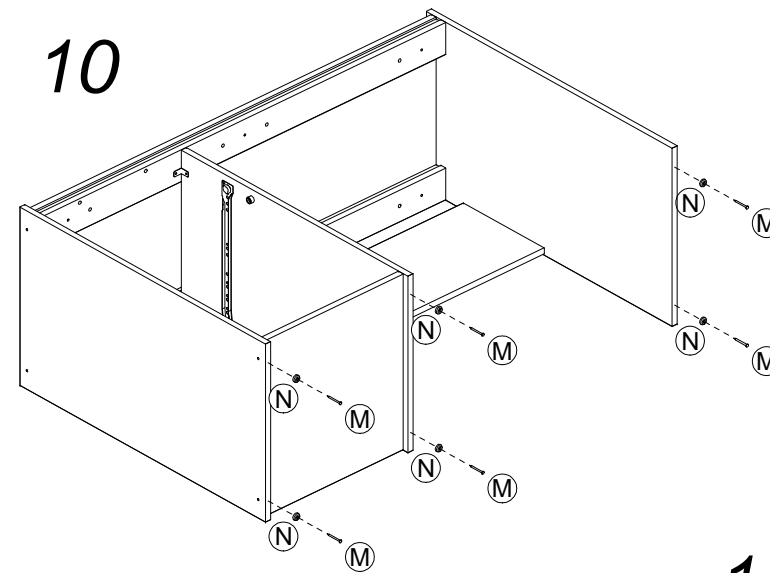
Rev 00



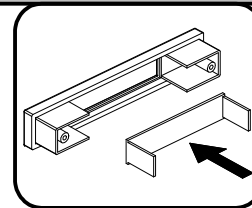
ANTES DE INICIAR A MONTAGEM, IDENTIFIQUE TODAS AS PEÇAS E ACESSÓRIOS.  
 ANTES DE EMPEZAR EL ARMADO, IDENTIFIQUE TODAS LAS PIEZAS Y ACCESORIOS.  
 BEFORE STARTING THE ASSEMBLY, IDENTIFY ALL PARTS AND ACCESSORIES.



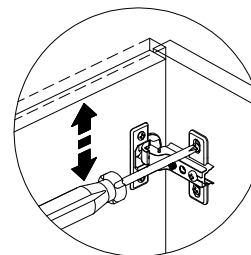
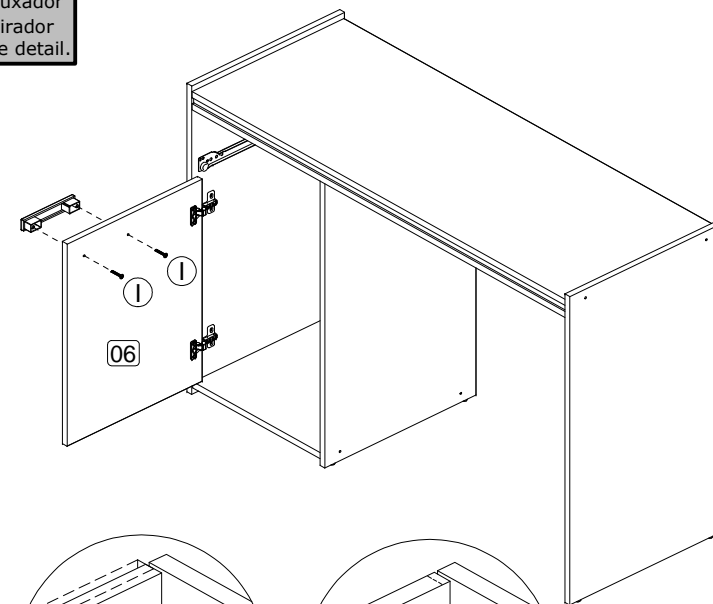
# 10



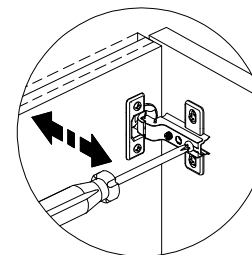
Escolha a cor do detalhe do puxador  
 Elija el color del detalle del tirador  
 Choose the color of the handle detail.



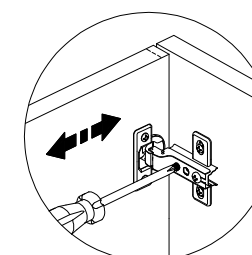
# 11



Regulagem Vertical  
 Ajuste Vertical  
 Vertical Adjustment

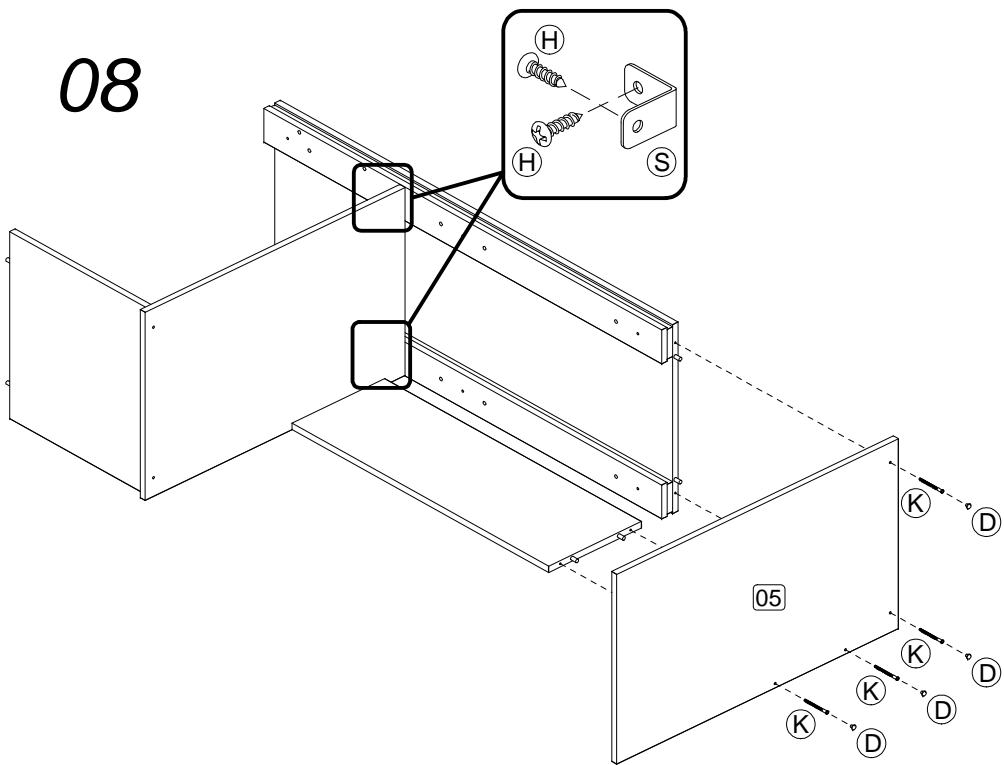


Regulagem Profundidade  
 Ajuste Profundidad  
 Depth Adjustment

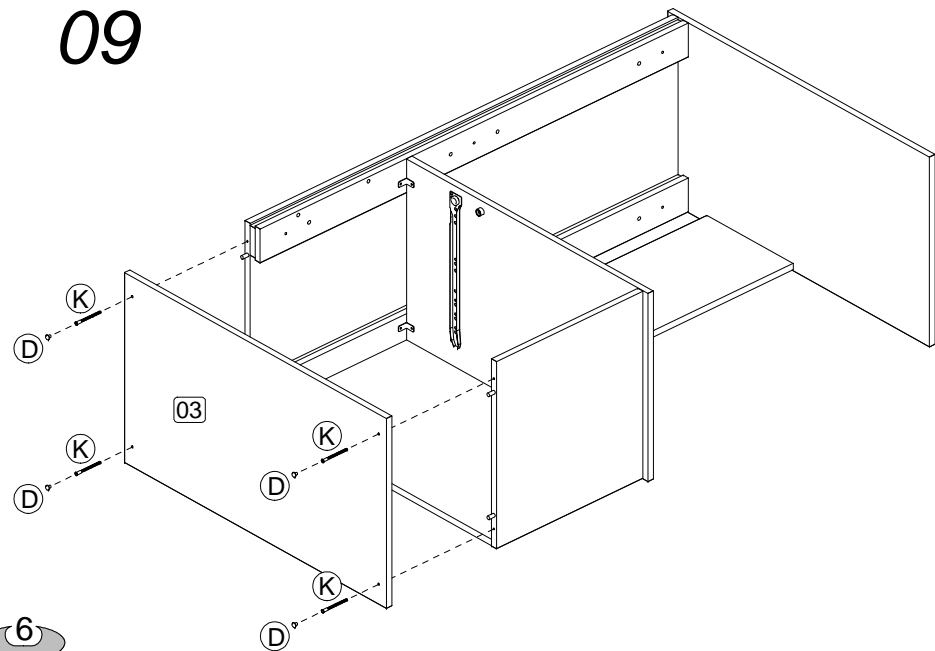


Regulagem Horizontal  
 Ajuste Horizontal  
 Horizontal Adjustment

08

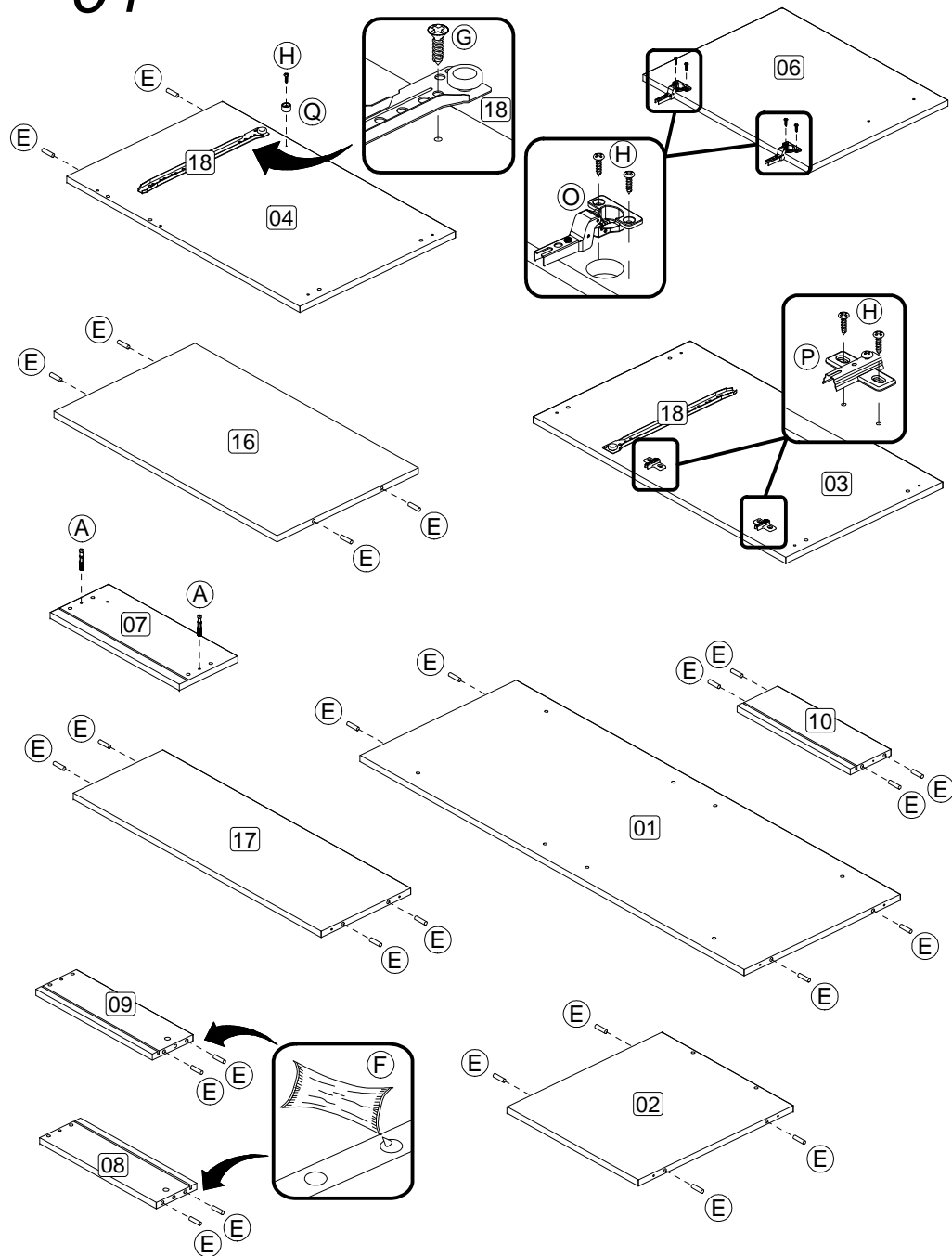


09

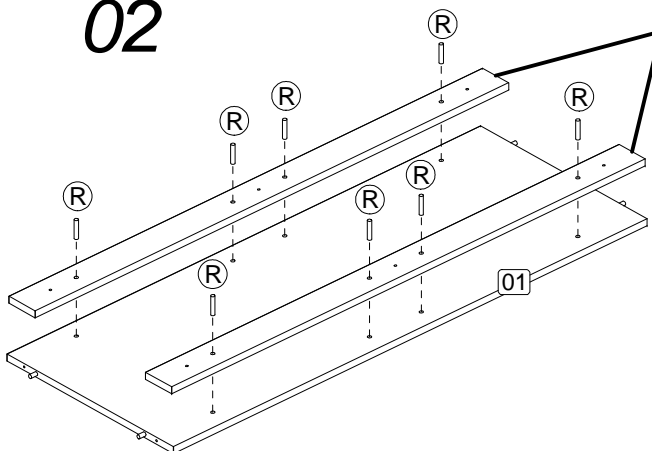


01

ETAPA DE PREPARAÇÃO DAS PEÇAS.  
 FASE DE PREPARACIÓN DE LAS PIEZAS.  
 STAGE OF PREPARATION OF THE PIECES.



02

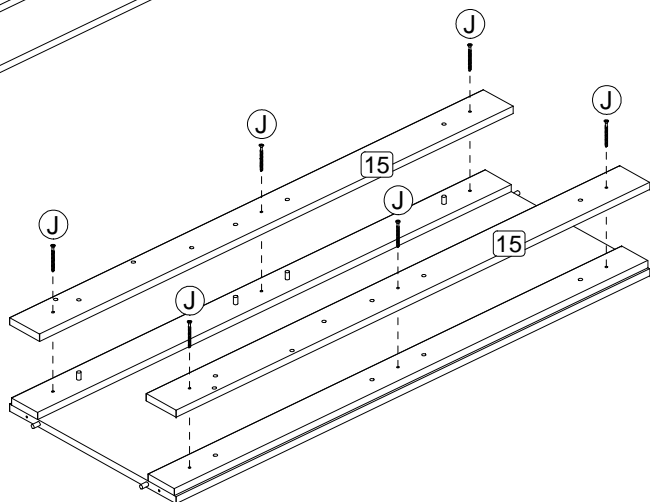


Utilize as peças 12, 13 ou 14 conforme a cor que desejar para efetuar a montagem. Ao final uma delas sobrar.

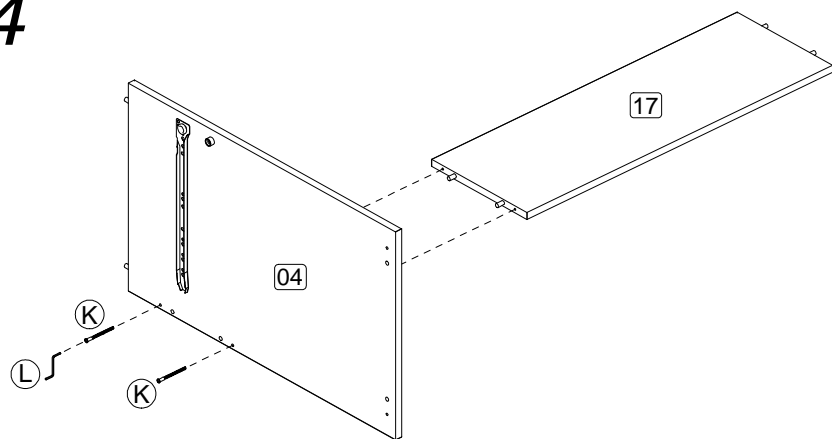
Utilice las piezas 12, 13 o 14 dependiendo del color que desea montar. Al final, uno de ellos será dejado.

Use the pieces 12, 13 or 14 depending on the color that you want assemble. At the end, one of them will be left

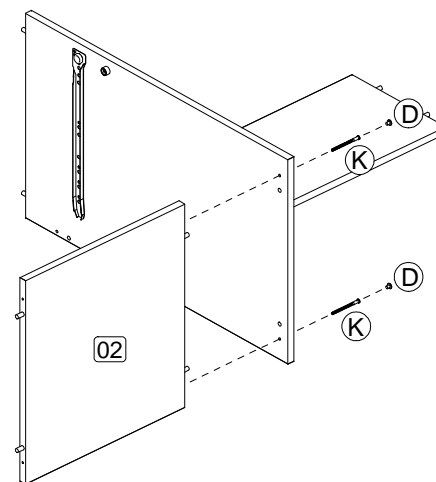
03



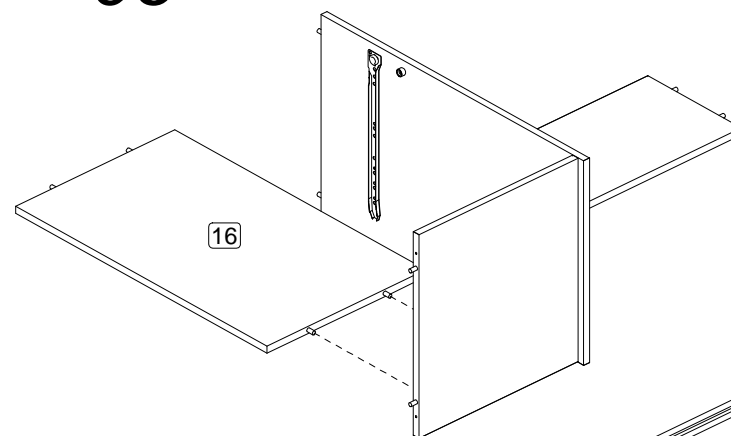
04



05



06



07

